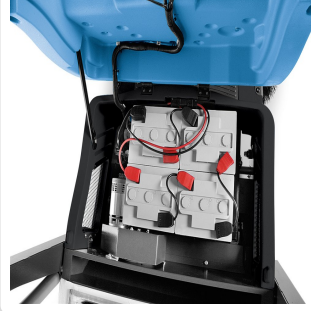


# FIMAP FS 800 B RIDE-ON SWEEPER ( BATTERY )



## Teknik Özellikler



**Areas of Use**  
6000 - 16000 m<sup>2</sup> in the field



**Debris hopper capacity**  
70 Lt



**Central Brush**  
800 mm



**Power Supply**  
24 Volt



**Productivity Theoretical**  
6700 m<sup>2</sup>/h



**Sound Level**  
85 dB (A)



**Brush Motor Power**  
400 Watt



**Machine Dimensions**  
1600\*1310\*1080 mm



**Working Width**  
950 mm



**Type of Dumping System**  
Manuel



**Number of Side Brushes**  
2\*400 mm



**Forward Working Speed**  
6 km/h



**Filter Surface Area**  
6 m<sup>2</sup>/h



**Traction Motor Power**  
400 Watt



**Brush Rpm**  
Cylinder : 505 / Side : 65 Rpm



**Weight**  
400 ( Batteries included ) Kg



**TMP ENDÜSTRİYEL TEMİZLİK MAKİNALARI SAN  
VE TİC.LTD.ŞTİ.**



Oruç Reis Mh. Giyimkent Sitesi 8. Sk. No: 104 -106 ESENLER / İSTANBUL

( 0212 ) 659 33 60

www.tmpmakina.com

bilgi@tmpmakina.com

444 2 130

( 0212 ) 659 33 62