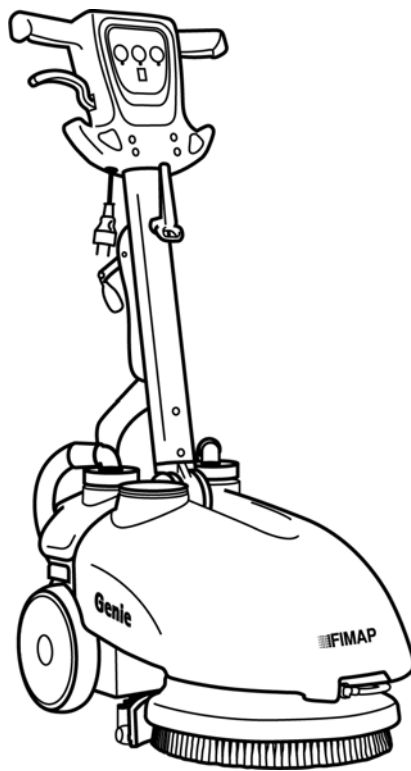


USE AND MAINTENANCE MANUAL



GENIE E

ED. 09-2019

ENG

ORIGINAL
INSTRUCTIONS
Doc. 10004515
Ver. AC



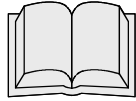
The descriptions contained in this document are not binding.
The company therefore reserves the right to make any modifications at any time to elements, details, or accessory supply, as considered necessary for reasons of improvement or manufacturing/commercial requirements.
The reproduction, even partial, of the text and drawings contained in this document is prohibited by law.

The company reserves the right to make any technical and/or supply modifications. The images are for reference purposes only, and are not binding in terms of design and supply.

Symbols used in the manual



Open book symbol with an "i"
Indicates the need to consult the instruction manual



Open book symbol
Used to tell the operator to read the manual before using the machine



Warning symbol
Carefully read the sections marked with this symbol, for the safety of the operator and the machine:



Warning symbol
Indicates danger of gas exhalation and leakage of corrosive liquids



Disposal symbol
Carefully read the sections marked with this symbol, for machine disposal

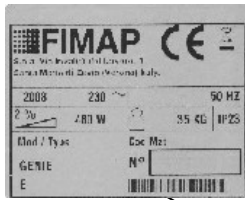
CONTENTS

ON CONSIGNMENT OF THE MACHINE	7
SERIAL NUMBER PLATE	7
INTRODUCTORY COMMENT	7
INTENDED USE	7
TECHNICAL DESCRIPTION	8
SYMBOLS USED ON THE MACHINE	8
GENERAL SAFETY REGULATIONS	8
MACHINE PREPARATION	8
1. HANDLING THE PACKED MACHINE	8
2. HOW TO UNPACK THE MACHINE	8
3. HANDLING AND TRANSPORTATION OF THE UNPACKED MACHINE	8
4. CONNECTING THE MACHINE	8
5. INSTRUMENT PANEL COMPONENTS	9
6. FIXING THE HANDLEBARS	9
7. SOLUTION TANK	9
8. DETERGENT SOLUTION	9
9. RECOVERY TANK	10
10. ASSEMBLING THE BRUSH	10
WORK	11
1. PREPARING TO WORK	11
2. OVERFLOW DEVICE	11
3. FORWARD MOVEMENT	12
AT THE END OF THE WORK	12
DAILY MAINTENANCE	14
1. CLEANING THE RECOVERY TANK	14
2. EMPTYING THE SOLUTION TANK	14
3. CLEANING THE SQUEEGEE	15
4. REPLACING THE SQUEEGEE RUBBERS	15
5. DISASSEMBLING THE BRUSH	16
PERIODIC MAINTENANCE	17
1. CLEANING THE SQUEEGEE TUBE	17
2. CLEANING THE SOLUTION TANK AND FILTER	17
TROUBLESHOOTING	18
1. ELECTRICAL SAFETY	18
2. INSUFFICIENT WATER ON THE BRUSHES	18
3. THE MACHINE DOES NOT CLEAN WELL	18
4. THE SQUEEGEE DOES NOT DRY PERFECTLY	18
5. EXCESSIVE FOAM PRODUCTION	18
CHOOSING AND USING THE BRUSHES	19
SUGGESTED POWER CABLE EXTENSION	19
MACHINE DISPOSAL	19
EC DECLARATION OF CONFORMITY	19

On consignment of the machine

When the machine is consigned to the customer, an immediate check must be performed to ensure all the material mentioned in the shipping documents has been received, and also to check the machine has not suffered damage during transportation. If this is the case, the carrier must ascertain the extent of the damage at once, informing our customer service office. It is only by prompt action of this type that the missing material can be obtained, and compensation for damage successfully claimed.

Serial number plate



Introductory comment

GENIE E is a floor scrubbing machine which, by means of the mechanical action of the rotating brush and the chemical action of a water/detergent solution, can clean any type of flooring. As it advances, it also collects the dirt that is removed as well as any detergent solution not absorbed by the floor.

The machine must only be used for this purpose. Even the best machines will only work well if used correctly and kept in good working order. We therefore recommend you read this instruction booklet carefully, and consult it whenever difficulties arise while using the machine. If necessary, remember that our customer assistance service (organised in collaboration with our dealers) is always available for advice or direct intervention.

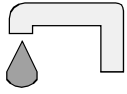
Intended use

The floor scrubbing machine is designed for the professional cleaning of surfaces and floors in industrial, commercial and public environments only. It is only suitable for use in closed (or at least covered) places.

The machine is not suitable for use in the rain, or under water jets. IT IS **FORBIDDEN** to use the machine for picking up dangerous dusts or inflammable liquids in places with an explosive atmosphere. In addition, it is not suitable as a means of transport for people or objects.

TECHNICAL DESCRIPTION	XP #	JhqIn## 563##	JhqIn## 443##
Qrp lqd#qsw#erz hu#IIF#3668050:5#IIF#5;;80< #	rZ #	3/87#	3/87#
Z runlj# ljk#	pp #	693#	693#
Z ljk# #hd#cxhjh#	pp #	773#	773#
Z runlj#dsdf.l#	p ⁵ 2#	4668#	4668#
Euxkdv#gdp hnu#ru#hgjk,#	Ø#p #	689#	689#
Euxk#esp #	usp #	473#	473#
Infnh(huvg#q#k#euxkdv#	Q#	4:7#	4:7#
Euxk#p rvuf#Udng#zodjh#	YK)#	563#B3#	443#B3#
Euxk#p rvuf#Udng#erz hu#	Z #	653#	653#
Inuz dug#shhg# sh#	#	vhp ldxw#	vhp ldxw#
Inuz dug#shhg#	Np 2#	6#	6#
P d{p xp #jwgq#	#	5 (#	5 (#
Vxfwlrq#p rvuf#Udng#zodjh#	Y#K)#	563#B3#	443#B3#
Ydfexp #p rvuf#Udng#erz hu#	Z #	553#	553#
P d{p xp #dfexp #IIF#5;;80< #IIF#364504 #	rSd#	:5#	:5#
Vrowlrq#dgn#	#	:#	:#
Uhfryhu #dgn#	#	<#	<#
Gp hqvlrqv# #kh#shq#p dfkq#Ohgjk#Khljk#Z ljk,#	pp #	948{4438{798#	948{4438{798#
Gp hqvlrqv# #kh#favg#p dfkq#Ohgjk#Khljk#Z ljk,#	pp #	;;8{758{798#	;;8{758{798#
P dfkq#z hljk#z khq#p sw#	nj#	63#	63#
Wdqvsrwg#p dfkq#z hljk#	nj#	63#	63#
Z hljk# #kh#p dfkq#z khq#hdg #ru#vh#JYZ #	nj#	73#	73#
Vrxqg#uhvvh#byh#q#shudru#hd#IVR#4534 #OsD,#	gE#	9914#	9914#
Xqfhudq #N _o #	gE#	417#	417#
KdggOlup #/eudwlrq#IIF#3668050:5#IIF#5;;80< #IVR#67<04 #	p 2 ⁵ #	5#	5#
Xqfhudq #	#	6/8 (#	6/8 (#

SYMBOLS USED ON THE MACHINE



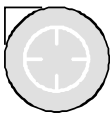
Water system solenoid activation/deactivation switch symbol:

Used on the control handlebars to indicate the switch that controls the solenoid valve within the machine's water system.



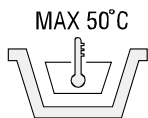
Machine main switch symbol:

Used on the control handlebars to indicate the machine's main switch.



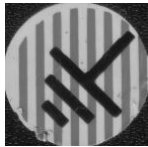
Suction motor activation/deactivation switch symbol:

Used on the control handlebars to indicate the switch that controls the machine's suction motor.



Symbol for maximum temperature for filling the solution tank:

Used near the solution tank filling hole to indicate the maximum temperature of the water used to safely fill the tank.



Electrical system earth symbol:

Used on the frame of the machine to indicate the earth point of the machine's electric system.



Maximum gradeability symbol:

Used on the serial number plate to indicate the maximum gradeability with the machine in scrubbing and drying mode.

GENERAL SAFETY REGULATIONS

Before using the machine, please read the following document carefully and follow the instructions contained herein, along with the instructions in the document supplied with the machine itself, "GENERAL SAFETY REGULATIONS" (document code 10083659).

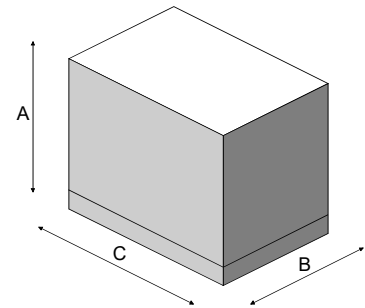
MACHINE PREPARATION

1. HANDLING THE PACKED MACHINE

The machine is contained within specific packaging.
 Every pallet consists of four machines arranged on two levels.
 It is not possible to place more than two packages on top of each other.
 The overall mass for a single package is 42 kg.

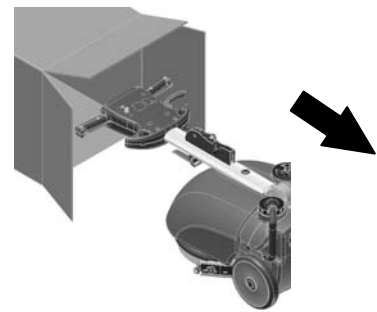
The overall dimensions of the package are:

- A: 500 mm
- B: 500 mm
- C: 1150 mm



2. HOW TO UNPACK THE MACHINE

1. Open the packaging on the side indicated.
2. Extract the machine from its packaging.



3. HANDLING AND TRANSPORTATION OF THE UNPACKED MACHINE

Genie E is a machine that can be managed in all situations and transported without effort, even in small vehicles.

Just lift the front part, using the machine handlebars as a lever. The big rear wheels mean it can be towed anywhere and loaded on a truck by means of a simple ramp.

Genie E is easy to transport even by car. Exploiting the full flexibility of the handlebars, you can fold it up (see the handlebars fixing section) and, with the help of a colleague, place it in the boot of the car without disassembling any components.



4. CONNECTING THE MACHINE

For the connection, you must:

1. Connect the extension lead (not supplied) to the plug on the handlebar.
2. block the extension lead to the cable-holder handle (2) in front of the handlebars
3. connect the extension lead to the wall socket



ATTENTION: before connecting the extension lead to the socket, check the switches are in the off ("0") position!



PREPARATION OF MACHINE

5. INSTRUMENT PANEL COMPONENTS

The instrument panel components are identified as follows:

- 41 Main switch (1)
- 51 Suction switch (2)
- 61 Solenoid valve switch (3)



6. FIXING THE HANDLEBARS

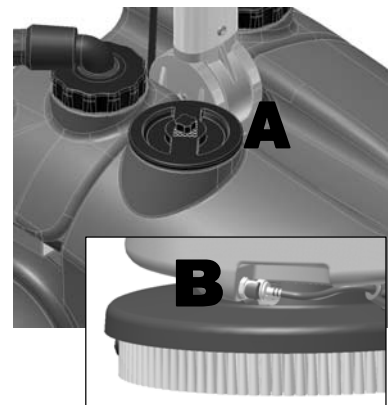
For packaging purposes the handlebars are supplied folded; they must now be put in the working position. Proceed as follows:

- 1. raise the handlebars by pulling the lever - indicated by the arrow - upwards
- 2. place the machine in the working position



7. SOLUTION TANK

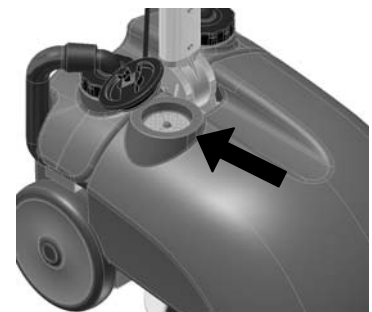
The recovery tank must be completely empty each time the solution tank is filled. Verify that the cap is correctly inserted in its housing (A). Verify that the quick connection is correctly connected (B).



8. DETERGENT SOLUTION

Proceed as follows to fill the solution tank:

- 1. Make sure that the recovery tank is empty
 - 2. Make sure that the main switch is off
 - 3. Remove the inlet cap located on the right rear side of the machine.
 - 4. Fill it with clean water at a temperature not exceeding 50°C.
- Add the liquid detergent to the tank in the concentration and manner indicated on the detergent manufacturer's label. The formation of excess foam could damage the vacuum motor, so use only the minimum amount of detergent that is necessary.



PREPARATION OF MACHINE



ATTENTION: Acid or alkaline maintenance detergent can be used with pH values between 4 and 10 and that do not contain: oxidising agents, chlorine or bromine, formaldehyde, mineral solvents.



ATTENTION: Always use detergents whose manufacturer's label indicates their suitability for scrubbing machines. Do not use acid or alkaline products or solvents without this indication. Always use low-foam detergent. To avoid the production of foam, put a minimum quantity of antifoam liquid in the recovery tank before starting to clean. Do not use pure acids.



DW#H#Q#W#R#Q# #v#h#u#l#u#E#y#l#g#r#z#d#|#z#h#u#s#u#r#w#f#w#h#j#o#y#h#v#r#E#y#r#b#
w#h#l#u#h# #h#u#l#x#v#l#p#u#l#r#k#g#v#h#

9. RECOVERY TANK

Make sure the recovery tank is empty, otherwise empty it completely.
Verify that the recovery tank is correctly inserted in its housing, and that the tubes are correctly inserted in the tank elbows.
Verify that the caps are correctly closed.



10. ASSEMBLING THE BRUSH

To insert the brush:

1. Connect the machine to the mains power supply
2. Place the brush in front of the base body
3. Raise the brush head by using the handlebars as a lever
4. Place the brush head above the brush
5. Activate the handlebar tilt lever
6. Press the main switch to turn on the machine
7. Pulse press the dead man's lever to engage the brush to the brush head



WORK

1. PREPARING TO WORK

Certain operations must be carried out before starting any work:

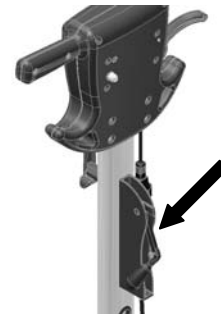
- 41 Verify that the tanks are properly inserted in the housings and connected.
- 51 verify that the switches are in the off ("0") position
- 61 connect the cable to the socket



ATTENTION: Verify that the electricity socket has a protective conductor (or an earth conductor).
ATTENTION: Verify that the power supply voltage and frequency comply with the nominal values required by the machine.
ATTENTION: Verify that the power supply cable is in perfect condition.



- 7: Carry out the operations to prepare the machine
- 81 lower the squeegee command lever in order to start working



- 71 press the main switch (1) and verify that the green indicator light comes on
- 81 press the suction switch (2)
- 91 press the solenoid valve switch (3)

At this point, the machine can work efficiently until the detergent solution runs out; use the operating lever that activates the brushes (4)



2. OVERFLOW DEVICE

The machine is fitted with a ball filter which is activated when the recovery tank is full, causing the suction tube to close.
 In this case, it is necessary to switch off the machine and empty the recovery tank.



ATTENTION: This operation must be carried out wearing gloves to protect against contact with dangerous solutions.



WORK

3. FORWARD MOVEMENT

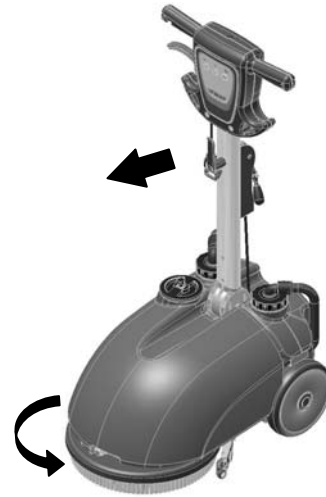
The traction of these machines is obtained by means of the brush which, by working slightly inclined, is able to drag the machine forwards.



ATTENTION: Ensure that the moving brush never comes into contact with the power supply cable.



ATTENTION: when making even brief reverse movements, verify that the squeegee is raised.



AT THE END OF THE WORK

At the end of the work, and before carrying out any type of maintenance, perform the following operations:

- 41 turn off the solenoid valve switch (3).
- 51 raise the squeegee by means of the rear handle.
- 61 turn off the suction switch (2).
- 71 Turn off the main switch (1).
- 81 disconnect the power cable from the mains socket.



- 91 Take the machine to the location designated for draining the water.
- :1 Disconnect the suction pipes
- ;1 Disconnect the hook securing the recovery tank on the rear of the machine.
- <1 Remove the recovery tank.



- 431empty the recovery tank by removing the caps and tilting it
- 441disassemble the brush and clean it with a jet of water (to disassemble the brush, see "DISASSEMBLING THE BRUSH" below)



ATTENTION: This operation must be carried out wearing gloves to protect against contact with dangerous solutions.



DAILY MAINTENANCE

PERFORM ALL MAINTENANCE OPERATIONS IN SEQUENCE

1. CLEANING THE RECOVERY TANK

- 41 Make sure the power cable of the machine is unplugged from the outlet
- 51 Disconnect the suction hose from the recovery tank
- 61 Disconnect the hook securing the recovery tank on the rear of the machine.
- 71 Remove the recovery tank.



ATTENTION: This operation must be carried out wearing gloves to protect against contact with dangerous solutions.



ATTENTION: Before carrying out any type of maintenance, disconnect the machine's power supply cable.

- 81 Remove the caps to open the tank.
- 91 Clean the filter under running water.
- :1 Rinse the tank and clean with a jet of water



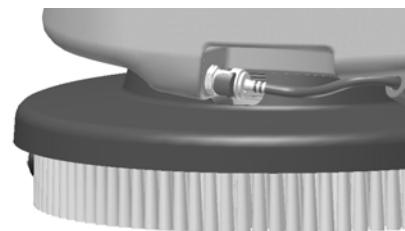
ATTENTION: This operation must be carried out wearing gloves to protect against contact with dangerous solutions.



2. EMPTYING THE SOLUTION TANK

Proceed as follows to empty the solution tank:

- 41 Switch off the solenoid valve switch
- 51 Switch off the suction switch
- 61 Switch off the main switch
- 71 Disconnect the power cable from the socket
- 81 Disconnect the quick connector on the front of the solution tank
- 91 Insert the **Genie E solution tank discharge pipe kit** (optional)



ATTENTION: This operation must be carried out wearing gloves to protect against contact with dangerous solutions.

DAILY MAINTENANCE

3. CLEANING THE SQUEEGEE

Verify that the squeegee rubbers are always clean, for a better drying action.

To clean them you must:

1. raise the machine
2. carefully clean the inside
3. carefully clean the squeegee rubbers



ATTENTION: This operation must be carried out wearing gloves to protect against contact with dangerous solutions.



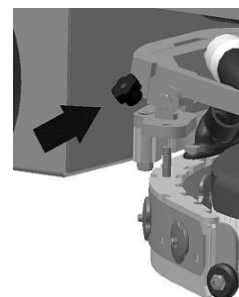
ATTENTION: Before carrying out any type of maintenance, disconnect the machine's power supply cable.

4. REPLACING THE SQUEEGEE RUBBERS

Verify that the state of wear and tear of the squeegee rubbers and, if necessary, replace them.

To replace it you must:

- 41 Raise the squeegee
- 51 Remove the two knobs
- 61 dis-assemble the squeegee from its support
- 71 remove the tube from the squeegee nozzle so that the squeegee can be removed



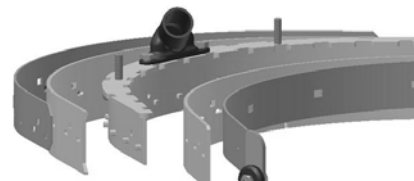
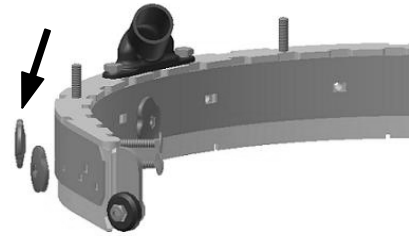
ATTENTION: This operation must be carried out wearing gloves to protect against contact with dangerous solutions.



ATTENTION: Before carrying out any type of maintenance, disconnect the machine's power supply cable.

DAILY MAINTENANCE

5. Unscrew the knobs on the squeegee that block the rubber-pressing blades and remove them
6. Remove the rubber-pressing blades
7. replace the rubbers
8. Reassemble everything, carrying out the above-mentioned operations in the reverse order.



ATTENTION: This operation must be carried out wearing gloves to protect against contact with dangerous solutions.



ATTENTION: Before carrying out any type of maintenance, disconnect the machine's power supply cable.

5. DISASSEMBLING THE BRUSH

1. raise the squeegee
2. Raise the machine by using the handlebars as a lever and position it with the recovery tank on the ground.
3. With the base raised, remove the brush manually by rotating it clockwise.



ATTENTION: During this operation, check there are no people or objects near the brush.



ATTENTION: Before carrying out any type of maintenance, disconnect the machine's power supply cable.



PERIODIC MAINTENANCE

1. CLEANING THE SQUEEGEE TUBE

Periodically, or whenever suction seems to be unsatisfactory, verify that the squeegee tube is not obstructed. To clean it, proceed as follows:

- 41 Unplug the machine's power cable
- 51 Remove the tube from the sleeve on the squeegee
- 61 remove the other end from the recovery tank
- 71 wash the inside of the tube with a water jet introduced from the side where it is connected to the tank
- 81 re-assemble the tube

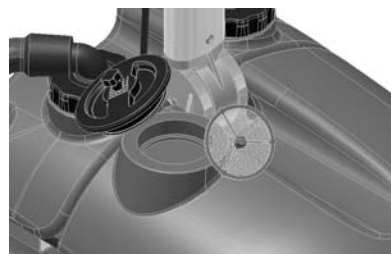


ATTENTION: Do not wash the tube running between the suction unit and the suction cap

2. CLEANING THE SOLUTION TANK AND FILTER

Cleaning is required as follows, either periodically or if inadequate water is emitted:

- 41 Disconnect the machine from the mains power supply
- 51 Disconnect the suction pipes
- 61 Remove the recovery tank retainer
- 71 Remove the recovery tank
- 81 Detach the quick connection to avoid breaking the connection itself.
- 91 Insert the **Genie E solution tank discharge pipe kit** (optional)
- :1 Loosen the solution tank cap



- ;1 Remove the filter and clean it.
- <1 Rinse the tank and clean with a jet of water.
- 431 Reassemble the filter and cap.
- 441 Remove the discharge kit and reassemble the quick connector
- 451 Reassemble the recovery tank



ATTENTION: This operation must be carried out wearing gloves to protect against contact with dangerous solutions.



ATTENTION: Contact a **FIMAP** technician in case of clogging of the quick coupling on the front of the solution tank

#

#

#

#

#

#

TROUBLESHOOTING

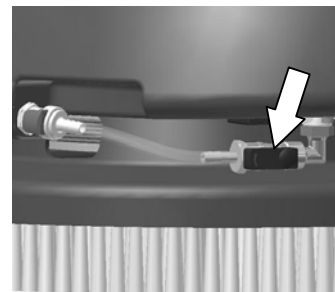
1. ELECTRICAL SAFETY

The machine is fitted with a thermal trip unit with manual reset.
The brush motor is reset by resetting the thermal trip unit located behind the handlebars.
If the machine stops repeatedly in a short space of time, you must contact the technical assistance centre.



2. INSUFFICIENT WATER ON THE BRUSHES

- 41 Verify that the solution tank filter is clean
- 51 Verify that the solenoid valve switch is on
- 61 Verify that the quick connection is correctly inserted
- 71 Check the cock regulation screw on the water outlet
- 81 Check the vent pin on the solution tank cap is lowered.



3. THE MACHINE DOES NOT CLEAN WELL

- 41 Check the state of wear and tear of the brushes and, if necessary, replace them. The brushes should be changed when the bristles are about 15mm long.

4. THE SQUEEGEE DOES NOT DRY PERFECTLY

- 41 Verify that the squeegee rubbers are clean.
- 51 Verify that the suction tubes are correctly inserted in their housing on the squeegee.
- 61 Verify that the distributor is clean.
- 71 Replace the rubbers, if worn



5. EXCESSIVE FOAM PRODUCTION

Check that a low foam detergent has been used. If necessary, add a small quantity of anti-foam liquid to the recovery tank.
Remember that, when the floor is not very dirty, more foam is generated. In this case the detergent solution should be more diluted.

CHOOSING AND USING THE BRUSHES

POLYPROPYLENE BRUSH (PPL)

Used on all types of floors. Good resistance to wear and tear, and hot water (no greater than 60°C.). PPL is non-hygroscopic and therefore retains its characteristics even when working in wet conditions.

PAD HOLDER

The pad holder is recommended for cleaning shiny surfaces.

There are two types of pad holders of the CENTRE LOCK type, equipped with a snap-type central locking system in plastic that allows the abrasive floor pads to be perfectly centred and held without any risk of them becoming detached:

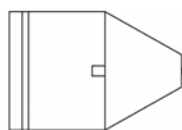
1. fitted with a series of anchor points that allow the abrasive floor pad to be held and dragged while working
2. fitted with a series of groups of bristles that allow the abrasive floor pad to be held and dragged while working

TABLE FOR CHOOSING THE BRUSHES

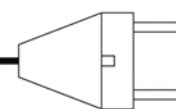
Machine	No.° of brushes	Code	Type of bristles	ØBristles	Ø Brush	Notes
GENIE E	1	421701	PPL	0.6	355	
		422213	Pad holder – anchor		355	
		422001	Pad holder – bristles	0.9	355	

SUGGESTED POWER CABLE EXTENSION

CAST SCHUKO PLUG



CAST SCHUKO PLUG



3 X 1,5 X 15000 mm

MACHINE DISPOSAL

Surfing# wk#fudsslj#khp dflk#p#fffrugqfn# wk#k# dwn#lsvrd#hnxwlrqv#p#rnf#k#frxqwl#p
zklk#k#p dflk#p#ehlj#vngl



EC DECLARATION OF CONFORMITY

The undersigned manufacturer:

FIMAP S.p.A.

Via Invalidi del Lavoro, 1

37059 Santa Maria di Zevio (VR)

declares under its sole responsibility that the products

FLOOR SCRUBBING MACHINES

mod. Genie E 230V - Genie E 110V

comply with the provisions of Directives:

2006/42/EC: Machinery Directive.

2014/35/EU: Low Voltage Directive.

2014/30/EU: Electromagnetic compatibility directive.

They also comply with the following standards:

EN 60335-1:2012/A11:2014

EN 60335-2-72:2012

EN 12100:2010

EN 61000-3-2:2014

EN 61000-3-3:2013

EN 55014-1:2006/A1:2009/A2:2011

EN 55014-2:2015

EN 62233:2008/AC:2008

The person authorized to compile the technical file:

Mr. Giancarlo Ruffo

Via Invalidi del Lavoro, 1

37059 Santa Maria di Zevio (VR) - ITALY

Santa Maria di Zevio (VR), 16/09/2019

Fimap S.p.A.
Legal representative
Giancarlo Ruffo



#



FIMAP - Via Invalidi del Lavoro, 1 - 37059 S. Maria di Zevio - Verona - Italy
Tel. +39 045 6060411 - Fax +39 045 6060417 - E-mail: fimap@fimap.com
www.fimap.com

#

#